

➔ Application

- LED 6,6 A / 230 V omni/bi-directional elevated low/medium intensity light for stationary/mobile aerodromes/heliports
 - APP approach centre line and crossbars light
 - END runway end light
 - FATO final approach and take-off area light
 - HAPP heliport approach steady burning light
 - RWY runway edge light
 - THR unway threshold light
 - THREND threshold/runway end light
 - TLOF touchdown and lift-off area light
 - TWY taxiway edge light

➔ Accordance with

- ICAO ANNEX 14, Vol. 1
5.3.9.9, 5.3.10.9, 5.3.11.4, 5.3.16.3, Tab. 6-3
- ICAO ANNEX 14, Vol. 2
Obr. 5-11
- IEC TS 61827
- FAA EB 67D

➔ Properties-common

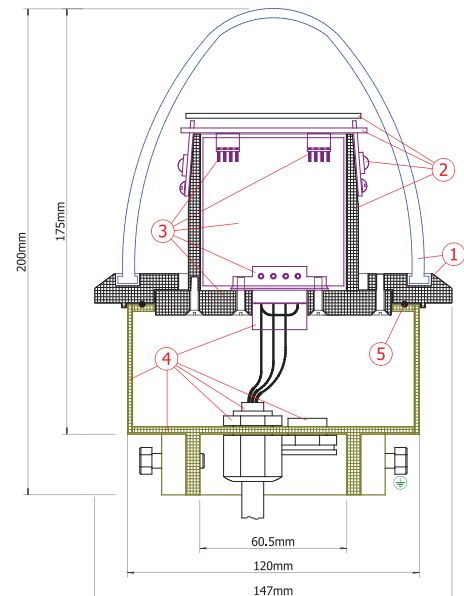
- long life cycle due to durable construction (aluminum alloys, stainless steel, glass)
- attaches to breakable coupling or stake Ø 60 mm
- quick and easy repairs due to removable light head (not needed to remove the whole light from the stake of frangible coupling)
- effective maintenance due to easy disassembly of the light head to basic modules, a wide range of spare parts and many common parts with other series TLE20 lights
- the light design enables pressure compensation and protects against water condensation inside the light
- LED monitoring secures that there will not be a lack of light intensity in certain azimuth
- integrated reflective surfaces enables easy light localization even if not operated

➔ Construction

1. glass head with aluminium ring
2. lighting unit with LEDs and LED driver
3. power supply unit with intensity regulation
4. basic unit with cables and connectors
5. ring sealing

➔ Properties-series 6,6 A power-ups

- accordance with FAA EB 67D LED intensity regulation standards
- as an option can be equipped with a module that disconnects isolating transformer secondary winding



➔ Properties – parallel 230 V power-ups

- light intensity is regulated via power-ups by PSK (phase shift keying), which secures that light intensity is not vulnerable to voltage losses or drops
- suitable economical substitution for series 6,6 A power-ups systems for vast heliports and airports with VFR RWY or non-precision IFR RWY
- a wide range of power-ups voltage level

chapter:

5.3.2

TLE20



→ Mechanical parameters

- weight – series 6,6 A power-ups 2,2 kg
- weight – parallel 230 V power-ups 1,8 kg
- dimensions: height 200 mm, diameter 147 mm

→ Resistance to

- temperature -55 ÷ +55 °C and thermal shock
- humidity, snow, ice, and water (IP67)
- salt fog, solar and UV radiation
- vibrations 20 ÷ 2 000 Hz with acceleration 2 G

→ Source of light

- high power LEDs, lifetime >100 000 hrs. of standard operation

→ Power-ups

- by isolating transformer with 6,6 A on secondary output (transformer power according to the light energy consumption)
- by parallel power-ups 1NPE ~50Hz/230V/TN-S for electrical appliance class I (fixed installation)
- by parallel power-ups 1N ~50Hz/230V/IT (electrically separated power-ups – without equipotential bonding) for electrical appliance class II (mobile installation)

Ordering codes

light fixture group

- 0 - omnidirectional
- 1 - unidirectional
- 2 - bidirectional

light fixture function

- APP approach centre line and crossbars light
- END runway end light
- FATO final approach and take-off area light
- HAPP heliport approach steady burning light
- RWY runway edge light
- THR unway threshold light
- THREND threshold/runway end light
- TLOF touchdown and lift-off area light
- TWY taxiway edge light

beam color

B - blue | G - green | R - red | W - white | Y - yellow

power-ups

- * if the power supply system is not used, the light is designed for airfield series power supply system 6,6 A
- P1 - parallel 230 V/50–60 Hz, electrical appliance class I, PSK 3-step regulation
- P2 - parallel 230 V/50–60 Hz, electrical appliance class II, PSK 3-step regulation

other specifications

- * code for „other specification“ must be written in alphabetical order
- PORT - mobile version (including base plate with handles)
- C2 – two leads (2-core cable), input L-823 style 5/1, output L-823 style 12/7 (parallel power ups only)
- C9 – non-standard power ups connection (non-standard connectors)
- M - monitoring module (open circuit condition)

TLE200-TWY -B -M
TLE200-TLOF-G -P1-C2
TLE200-FATO-W -P2

Note:

- spaces in examples above used for clarity only

Ordering code examples:

TLE200-TLOF-G-P1-C2	touchdown and lift-off area light, green, parallel 230 V/50–60 Hz, electrical appliance class I power-ups 230 V/50–60 Hz, regulation PSK, two leads (2-core cable), input L-823 style 1/5, output L-823 style 12/7 (parallel power ups only)
TLE200-FATO-W-P2-B	final approach and take-off area light, white, parallel 230 V/50–60 Hz, electrical appliance class II, power-ups 230 V/50–60 Hz, regulation PSK, single lead (2-core cable) L-823 style 1/5, mobile version