

### → Application

- elevated high intensity directional lights suitable for CAT I-III
  - APP approach centre line and crossbars light
  - ASR approach side row light
  - END runway end light
  - THR runway threshold light
  - THRWB runway threshold and wing bar light

### → Certificate basis

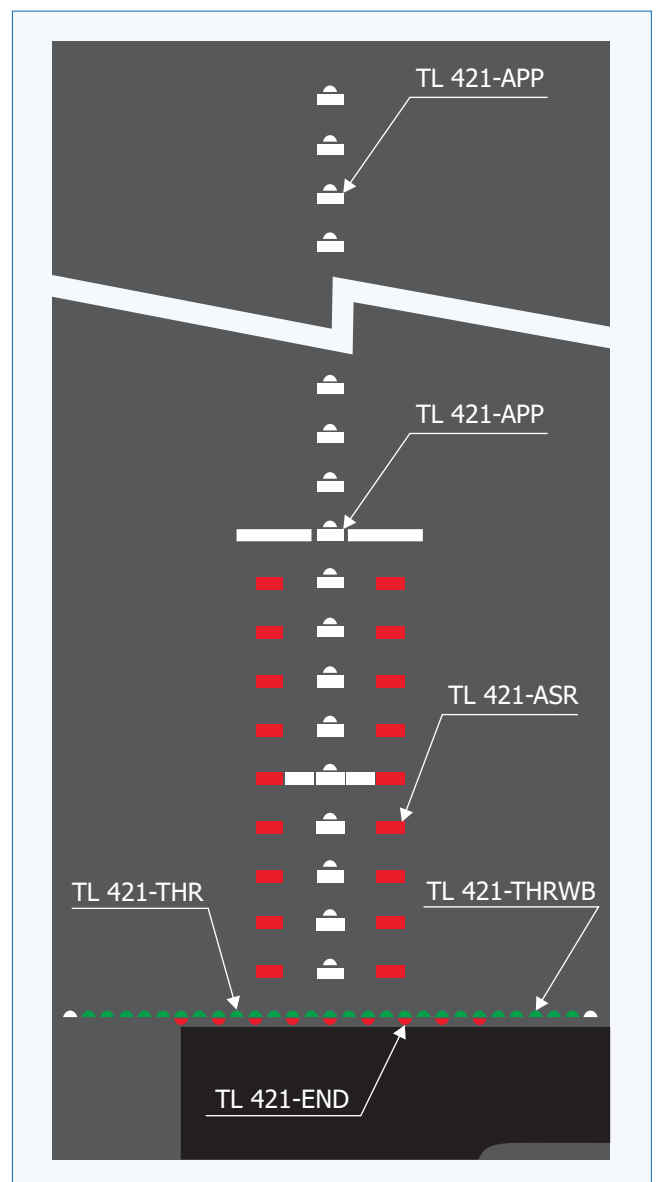
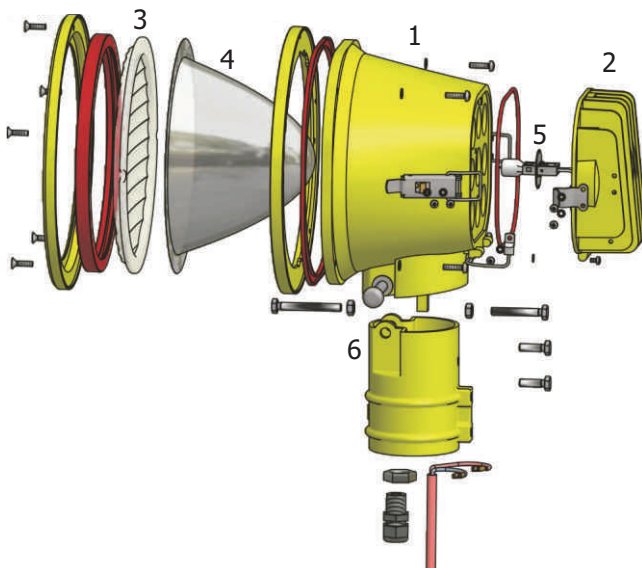
- ICAO Annex 14, Vol. 1, App. 1 a App. 2
- EASA CS ADR-DSN.U.930 a 940
- ICAO Doc 9157, Part 4, 18.2.14
- ICAO Doc 9157, Part 6, 4.9.1

### → Description/properties

- robust all-metal construction ensures high durability
- high degree of protection IP 67
- light construction allows easy elevation adjustment (-10 ° to + 14 °)
- removable rear cover allows easy bulb replacement
- all main parts are painted on RAL 1021

### → Construction

- 1 light body
- 2 back cover
- 3 diopter (spreader lens)
- 4 parabolic mirror
- 5 bulb (lamp) Pk30d
- 6 elevation adjustment part



chapter:

## 5.1.5

## TL 421



#### → Connection / supplying:

- instalation on fixing elements Ø 60 mm
  - breakable coupling 001 057.1
  - breakable coupling 001 057 and tube (Ø 60 mm)
  - crossbar with peg (Ø 60 mm)
- power-ups by isolating transformer with 6,6 A on secondary output (transformer power according to used lamp/lamps)
- standard light includes lamp and power-ups cabel for instalation directly on breakable coupling, connector L-823 Type II, Class B, Style 5
- optional cable lenghts  
0,5; 1,0; 1,5; 2,0; 2,5; 3,0 m

#### → Mechanical parameters

- dimensions 214×292×179 mm
- dimensions (cardboard box)  
(packed in 2 pieces) 320×320×270 mm
- light weight 2,3 kg
- adjustability
  - horizontal 0 to 360°
  - vertical -10 to +14°

#### → Operating conditions

- level of protection IP 67
- temperature -50 to +55 °C
- humidity up to 95 % at +55 °C
- wind resistance up to 480 km/h

#### → Source of light / optical system

- halogen airport bulb PK30d 6,6 A
- lamp power
  - TL 421-END 65/100 W
  - TL 421-APP/ASR/THR 150 W
  - TL 421-THRWB 200 W

#### → Accessories

- fixing elements (tubes, breakable couplings, base plates, etc.) and extension cables of the secondary wiring must be ordered separately

#### Ordering codes

**TL 421-APP-150-W**  
**TL 421-THR-150-G**

#### light fixture function

APP - approach centre line and crossbars light

ASR - approach side row light

END - runway end light

THR - runway threshold light

THRWB - runway threshold and wing bar light

#### lamp power

65 - END

100 - END

150 - APP, ASR, THR

200 - THRWB

\* for "END" light - it is necessary to set the required lamp power

#### beam color

G - green | R - red | W - white

#### Note:

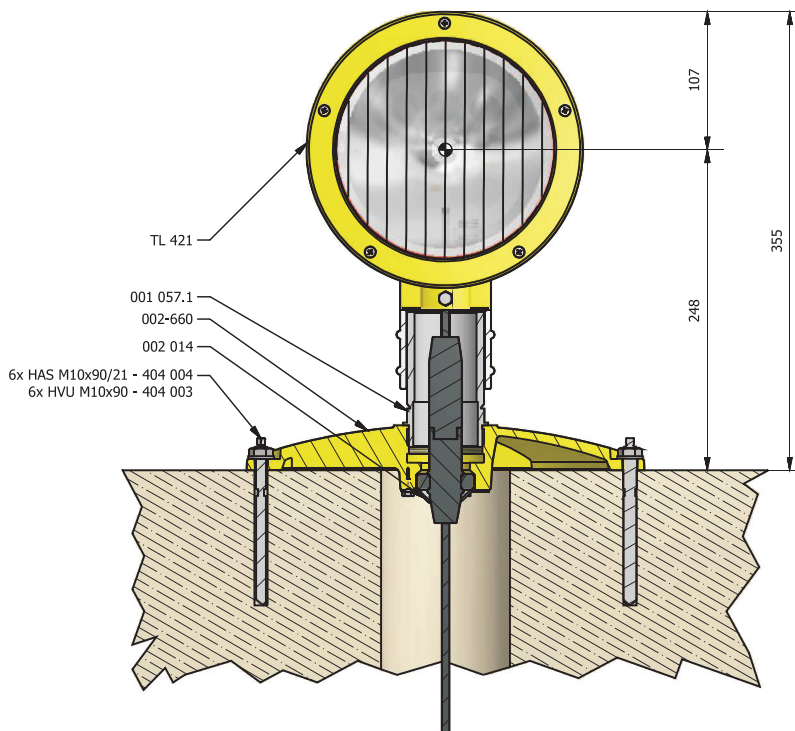
- spaces in examples above used for clarity only
- optional parameters used only if necessary
- lamp power is optional part of ordering code, except for "END" light

#### Ordering code examples:

**TL 421-APP** approach centre line or crossbars light**TL 421-ASR** approach side row light**TL 421-END-65** runway end light, 65 W**TL 421-END-100** runway end light, 100 W**TL 421-THR** runway threshold light**TL 421-THRWB** runway threshold or wing bar light

assembly on base plate

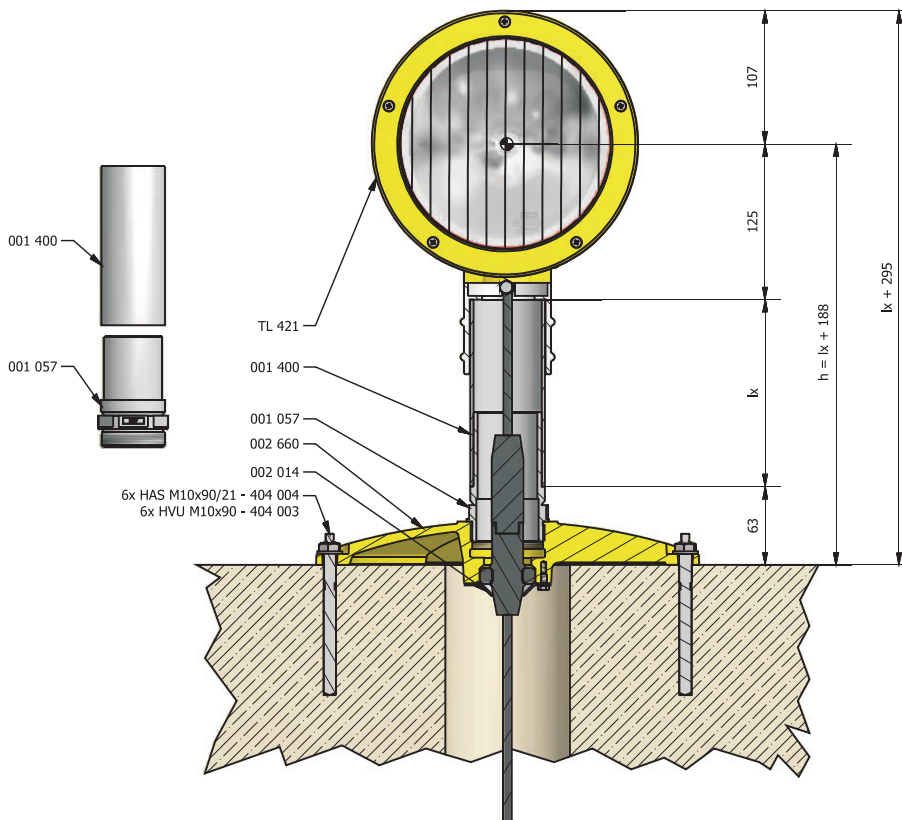
⊕ optical centre



assembly on base plate with tube (stake)

⊕ optical centre

h - optical height  
 $h = lx + 188$   
 $248 \leq h \leq 1999$   
 lx - tube length 001 400  
 $lx = h - 188 \text{ mm}$   
 $(60 \leq lx \leq 1811)$



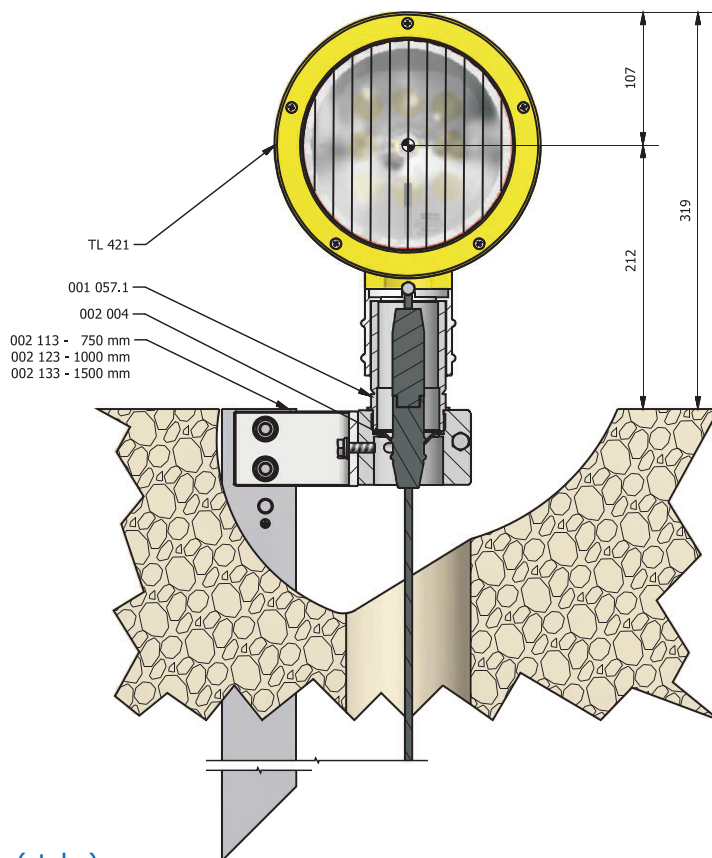
# 5.1.5

# TL 421

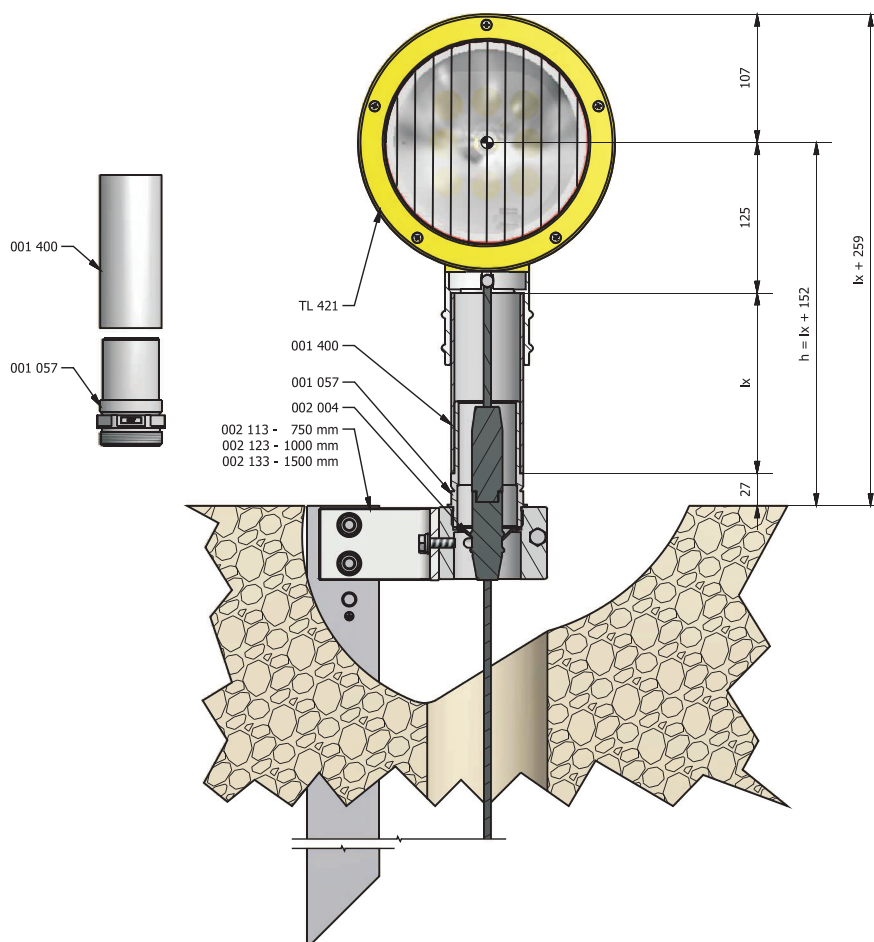


## assembly on needle

⊕ optical centre



## assembly on needle with tube (stake)



⊕ optical centre

h - optical height

$$h = lx + 152$$

$$212 \leq h \leq 1999$$

lx - tube length 001 400

$$lx = h - 152 \text{ mm}$$

$$(60 \leq lx \leq 1847)$$

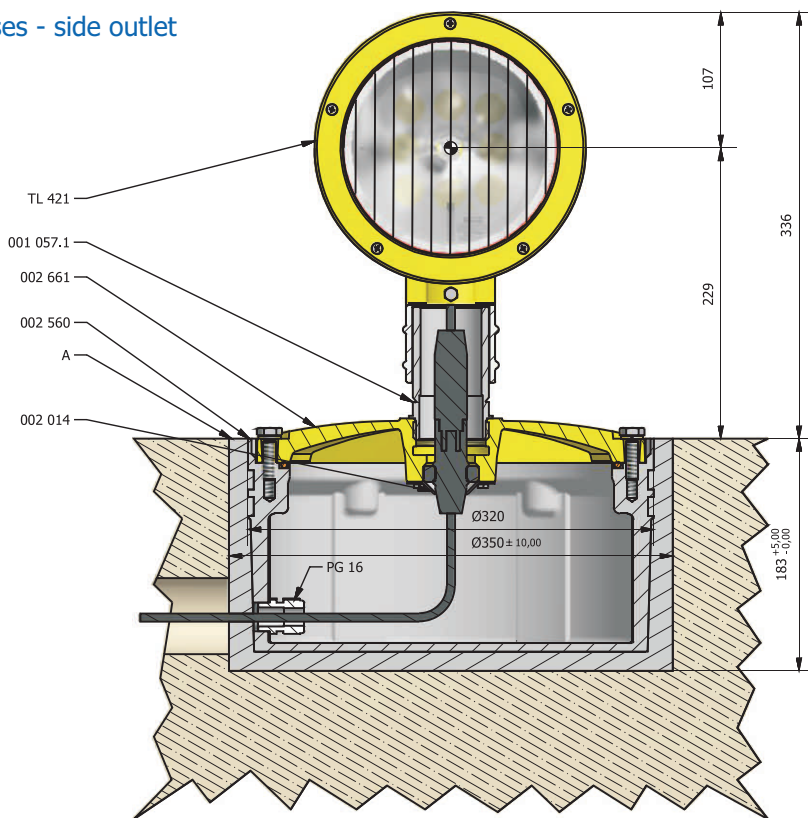


# TL 421

# 5.1.5

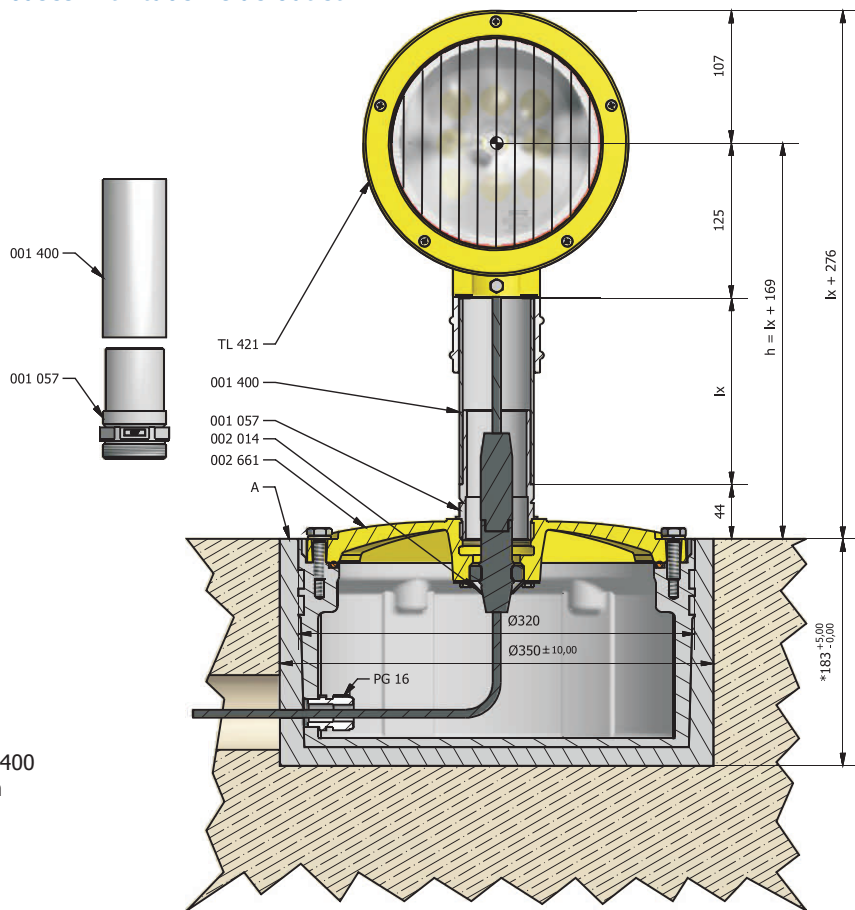
### assembly on shallow bases - side outlet

- ⊕ optical centre
- \* recommended size
- A pouring concrete



### assembly on shallow bases with tube - side outlet

- ⊕ optical centre
- \* - recommended size
- A - pouring concrete
- h - optical height  
 $h = lx + 169$   
 $229 \leq h \leq 1999$
- lx - tube length 001 400  
 $lx = h - 169 \text{ mm}$   
 $(60 \leq lx \leq 1830)$



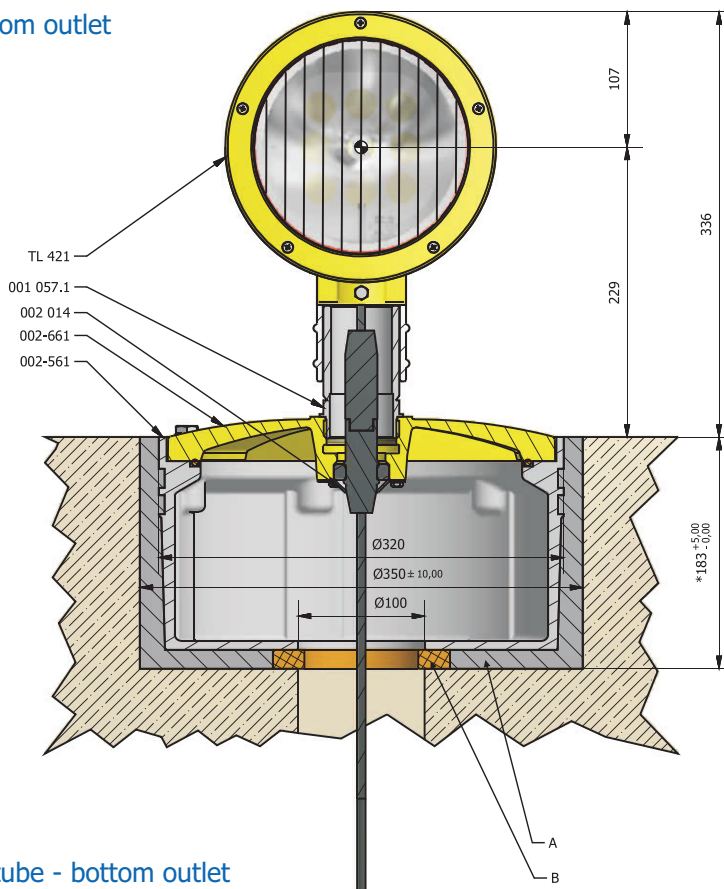
# 5.1.5

# TL 421

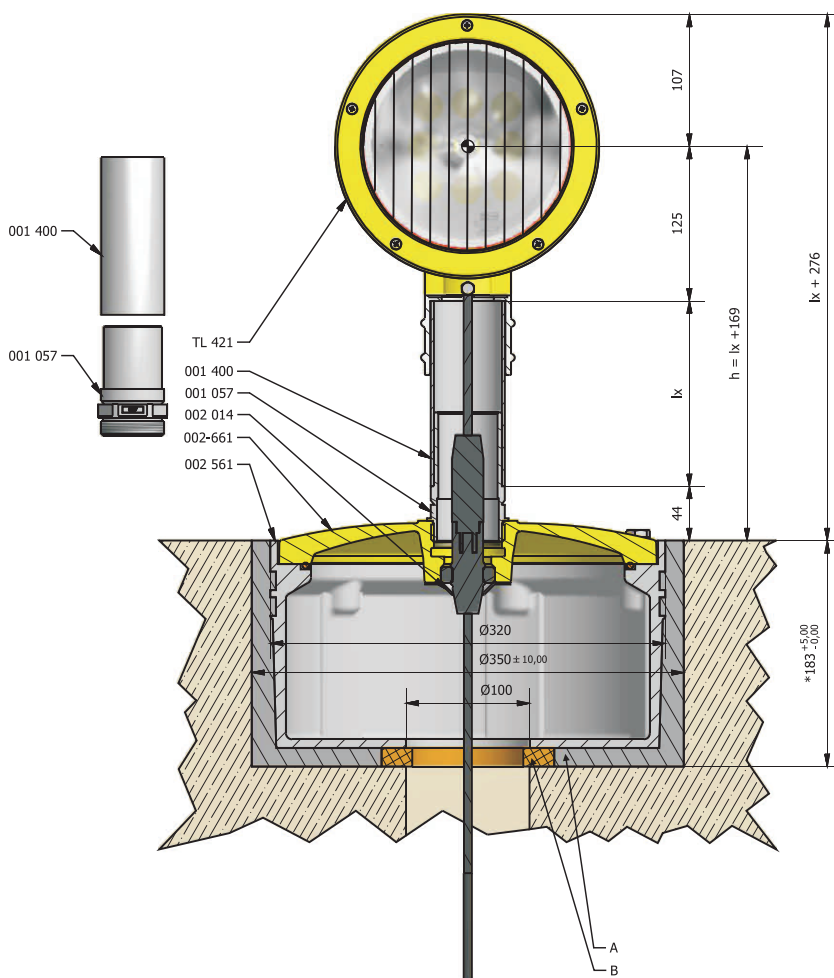


assembly on shallow bases - bottom outlet

- ⊕ optical centre
- \* - recommended size
- A - pouring concrete
- B - sealing insert



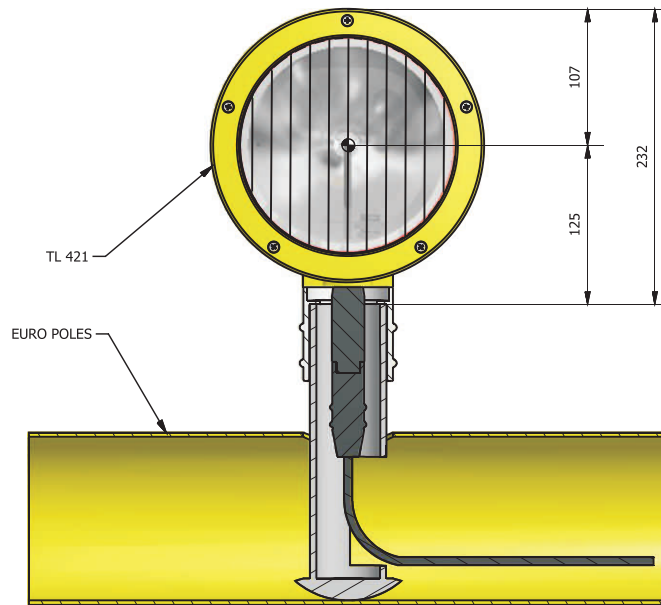
assembly on shallow bases with tube - bottom outlet



- ⊕ optical centre
- \* - recommended size
- A - pouring concrete
- B - sealing insert
- h - optical height  
 $h = lx + 169$   
 $229 \leq h \leq 1999$
- lx - tube length 001 400  
 $lx = h - 169 \text{ mm}$   
 $(60 \leq lx \leq 1830)$

assembly on crossbar with peg

⊕ optical centre



# 5.1.5

# TL 421



This page is intentionally left blank.