

Application

- testing of regulators in the load mode
- simulation of regulator's operating conditions

Description/Properties

- dummy load for constant current regulators (CCR)
- without forced cooling
- connection by cables with FAA L-823, Type I, Class A, Style 2 and Style 9 connectors
- output can be adjusted by rotary switches with step of 2 kW
- cable storage compartment at the bottom

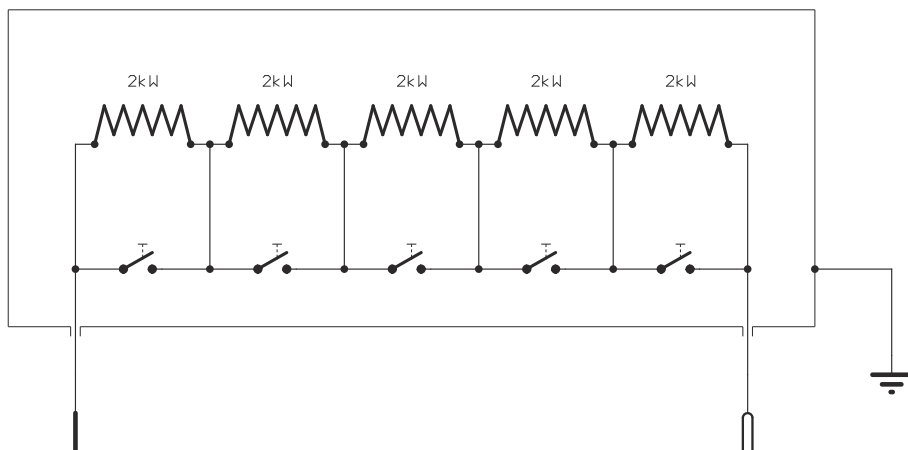


Electric parameters

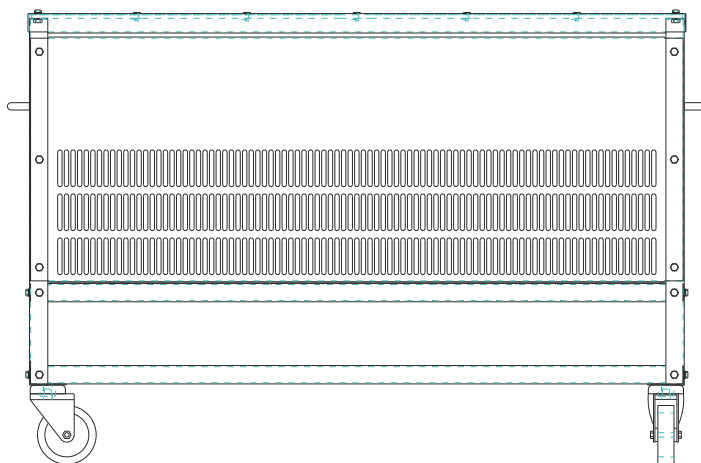
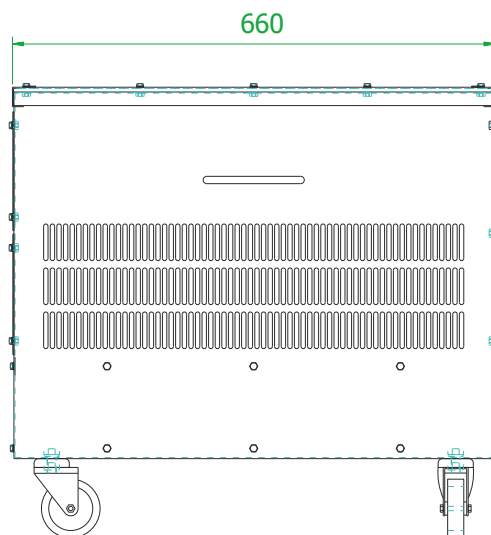
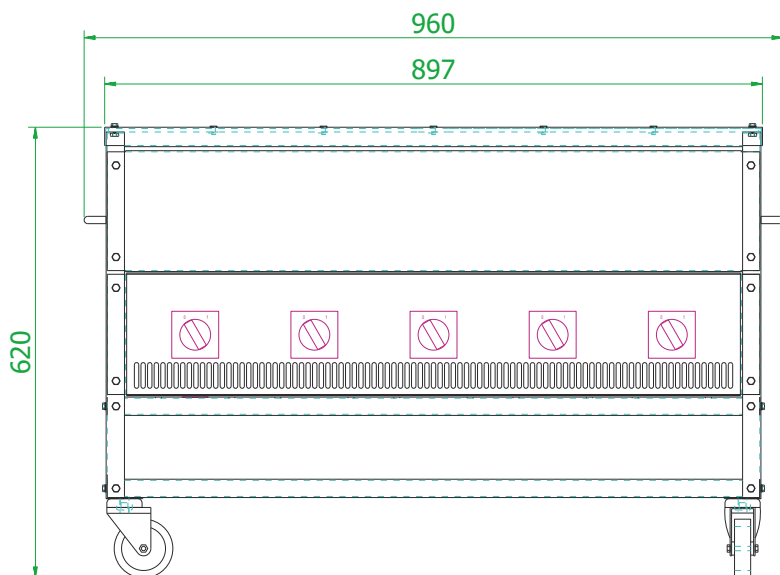
- maximum nominal current 6.6 A (8.3 A model on a request)
- maximum nominal output 10 kW
- output regulation
0 / 2 kW / 4 kW / 6 kW / 8 kW / 10 kW

Mechanical parameters

- weight ~ 50 kg
- dimensions 620 x 960 x 660 mm
- surface finish - galvanized
- connection cable length 3,5 m



Wiring diagram



We reserve the right to change design or specification data without notice